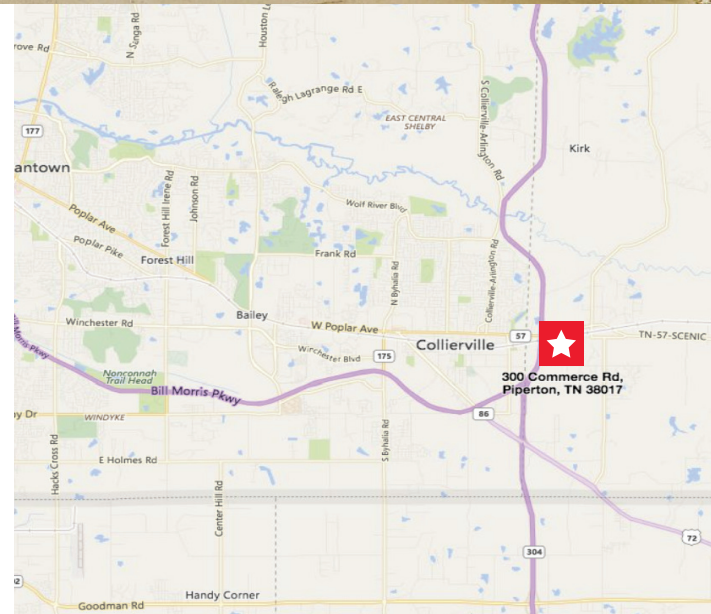




Industrial Building for Lease **40,800 SF Available**

Property Highlights

- Renovated in 2018, new roof and siding
- Two (2) free-standing metal buildings on 3.918 acres
- 3,000 SF out-building
- Approximately 2,930 SF office (2,544 SF main office)
- One (1) dock high loading platform
- Four (4) grade-level doors (16' wide x 14' tall)
- Low taxes (Fayette County)
- 3/4 of a mile from Hwy 385/I-269
- Outside Storage (Fenced)
- Abundant parking for trucks/trailers
- Excess land for expansion and/or trailer parking, outside storage, etc.
- Additional contiguous sites available - up to 7 acres



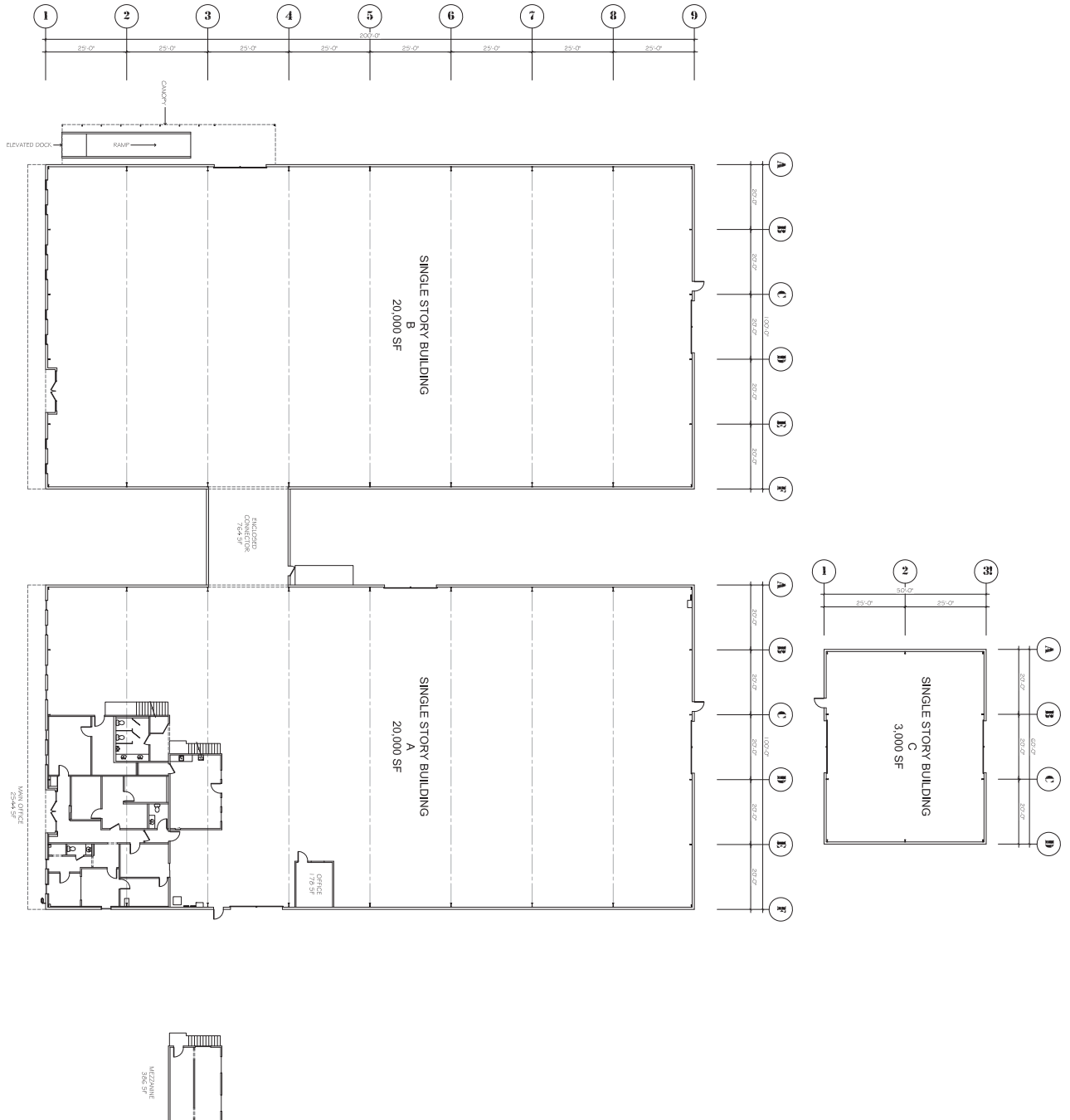
Mark Jenkins, SIOR, CCIM
Principal
901 362 9870
mjenkins@commadv.com

5101 Wheelis Drive, Suite 320
Memphis, TN 38117
Main: 901 683 0808
www.commadv.com

Independently Owned and Operated / A Member of the Cushman & Wakefield Alliance

Cushman & Wakefield Copyright 2015. No warranty or representation, express or implied, is made to the accuracy or completeness of the information contained herein, and same is submitted subject to errors, omissions, change of price, rental or other conditions, withdrawal without notice, and to any special listing conditions imposed by the property owner(s). As applicable, we make no representation as to the condition of the property (or properties) in question.

101 BUILDING PLAN



Mark Jenkins, SIOR, CCIM
Principal
901 362 9870
mjenkins@commadv.com

5101 Wheelis Drive, Suite 320
Memphis, TN 38117
Main: 901 683 0808
www.commadv.com

Independently Owned and Operated / A Member of the Cushman & Wakefield Alliance

Cushman & Wakefield Copyright 2015. No warranty or representation, express or implied, is made to the accuracy or completeness of the information contained herein, and same is submitted subject to errors, omissions, change of price, rental or other conditions, withdrawal without notice, and to any special listing conditions imposed by the property owner(s). As applicable, we make no representation as to the condition of the property (or properties) in question.